



Designa CONNECT LANE 600 FULL OUT

The new DESIGNA generation of exit control terminals stands out due to its clever and modular design and its modern, cutting-edge technology. The positioning of the operating elements and a user-friendly touch display guarantee simple operation and therefore a smooth parking process. An additional display is available for displaying individual digital content.

FEATURES

- TFT-touch display (10.1") with integrated functions and graphical user instructions
- TFT colour display (24") for displaying digital content, e.g. dynamic pricing developments, occupancy data, routing directions or advertising (optional)
- High-quality gloss finish of the front control panel with integrated illuminated ring
- Automatically switches to standby mode reducing power consumption to 35 W
- Processing tickets and cards with magnetic strip or barcode technology
- Acceptance of short-term parking tickets, season parker cards, value cards, credit cards, debit cards and special tickets
- High processing speed
- Vehicle counting according to the type of ticket
- Multiple swindling protection: Ticket insertion only after the induction loop has been occupied, message if passage does not occur
- Inside/outside check
- Tariff calculation incl. discount processing
- Ticket bag for withdrawn tickets
- Intercom device
- Ethernet connection

SELECTABLE VERSIONS

Barcode

Barcode card reader for processing barcode tickets

Magnetic strip

Magnetic card reader for processing side and/or central strip tickets

BASIC EQUIPMENT

- TFT-touch display (10.1") for operation and display of graphical user instructions (country-specific)
- High-quality gloss finish of the front control panel with integrated illuminated ring
- Ticket bag for withdrawn tickets
- Adjustable ticket shortage message
- Ethernet connection
- Fan

OPTIONS

- TFT colour display (24") for displaying digital content, e.g. tariffs, routing directions, occupancy data or advertising¹
- Magnetic card reader for processing central strip tickets in all 4 insertion directions in order to minimise operating errors and optimise throughput²
- Credit cards and debit cards can be used as short term parker tickets
- Cashless payment with credit cards and debit cards, receipt printout after payment³
- Value/time cheque processing
- Discount processing
- Hands-free entrance control with smart card system (RFID), such as Mifare, Legic, ISO 15693, as well as other short, medium and long range RFID systems

¹ Optional equipment not available in all countries

² With magnetic strip technology

³ country-specific

FURTHER OPTIONS

- Installation of customised readers
- Driver camera
- 2D Barcode-Scanner
- DESIGNA VoIP: SIP-compatible intercom unit
- Installation of customised intercom devices
- Software regulated heater
- Humidity sensor
- Inductive hearing loop
- Key switch
- Mechanical button intercom
- Voice output for user guidance
- I/O board functionality.
- Socket with residual current circuit breaker
- Surge arrester
- Special customised colour
- Ram protection posts
- Foundation frame/mounting kit

DESIGN

- Casing body and socket door made of stainless steel 1.4301 (V2A), outer and inner surface with durable, weather-resistant powder coating, fine structure deep matt colour
- Casing door is made of plastic (ASA), wet painted
- Front panel is made of Plexiglas XT
- casing door and socket door secured with lock
- Casing: RAL 7012 (basalt grey), RAL 9016 (traffic white)
- Casing door and front panel: RAL 9017 (traffic black)

TECHNICAL DATA

- Type: OUT_01
- Voltage supply: 230 V AC, 50 Hz
- Current consumption:
 - device: operation 0.21 A, max. 0.45 A
 - standby mode: 0.15 A
 - heater: 1.8 A
- Power consumption:
 - device: operation 48 W, max. 100 W
 - standby mode: 35 W
 - TFT display 24": 75 W
 - heater: 400 W
- Network system: TN-S System
- Pre-fuse: max. 16 A
- Terminal cross-section: max. 2,5 mm²
- Connection type: tension spring connection
- Protection class: I
- Control voltage: 24 V DC
- Rating: IP 54
- Laser class barcode-scanner: Class 2
- Temperature:
 - Operation: +10 bis +50 °C
 - with heater: -20 bis +50 °C
 - storage: -25 bis +70 °C
- Weight: ca. 50 kg
- Dimensions: see figure.

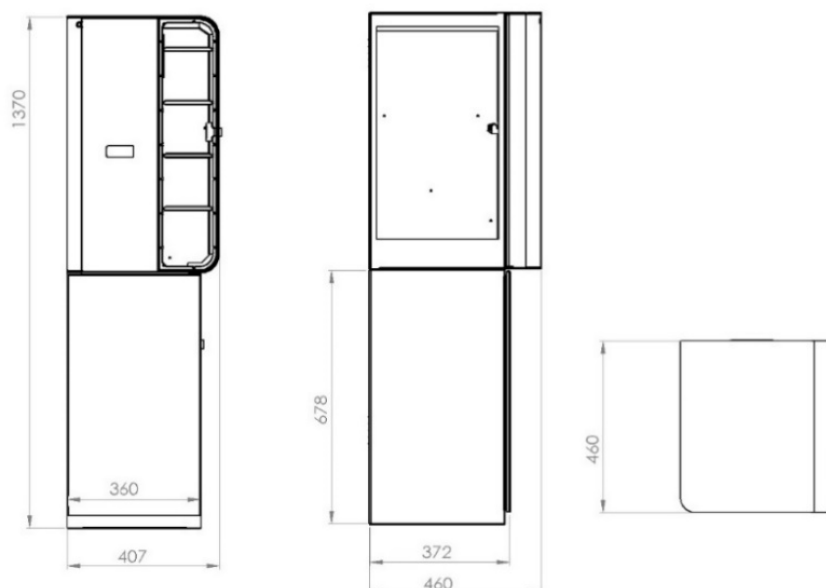
SYSTEM REQUIREMENTS

- Version X20 and newer

SAFETY/ REGULATIONS

- EU Declaration of Conformity in accordance with Machinery Directive 2006/42/EC, EMC 2014/30/EU

FIGURE, DIMENSIONS IN MM



CONTACT

DESIGNA Verkehrsleittechnik GmbH
Faluner Weg 3
24109 Kiel, Germany

info@designa.com
T: +49 (0) 431 5336-0
F: +49 (0) 431 5336-260