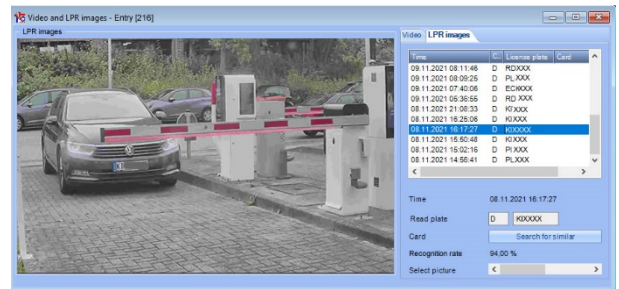


LPR

Licence Plate Recognition System

The integrated licence plate recognition system LPR enables the automatic recognition of vehicle licence plates in DESIGNA parking management: The licence plate automatically read by the LPR at the entrance and alphanumerically processed via image processing technology. The created image, the read licence plate and the ticket data are saved in the system¹. Optionally, the licence plate recognised at the exit can be compared to the licence plate which was recognised at the entrance.



Features

- High level of recognition even during unfavourable light conditions
- Recognition of licence plates at angles of up to 60°
- Combined recognition unit, which includes a camera, lighting and Ethernet connection
- Energy-saving infrared lighting
- Full integration in the DESIGNA parking management system
- Recognition unit communication with the system server via Ethernet

Standard Functions

Status information

- The current status of all the vehicles in the car park can be determined at any time.

Creating replacement tickets

- If a customer loses a short term parker ticket, the exact entrance time or the last payment can be determined via the licence plate and a corresponding replacement ticket can be issued.

Blacklist

- A vehicle whose licence plate is registered on a blacklist can be refused entrance and exit.

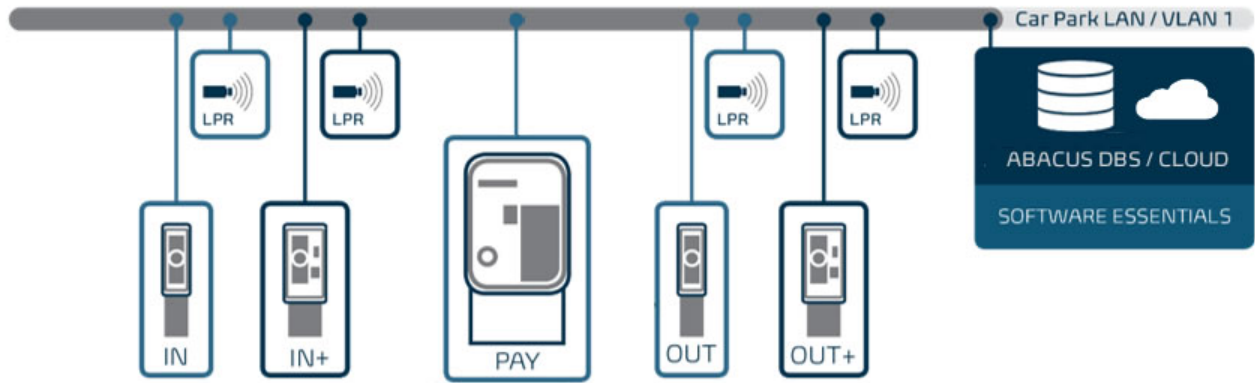
Whitelist

- In order to protect cards against misuse, a customer's cards are allocated to certain vehicles, i.e. utilisation of a card is only possible together with the respective vehicle.

Licence plate printed on the short term parker ticket

- The recognised licence plate is printed on the short term parker ticket. The licence plate can also be printed on a receipt issued at an automatic pay station.

¹ according to the recommendations of the independent State Agency for Data Protection



Optional Functions

Theft protection and swindle recognition

- The licence plate recognised at the car park exit is compared to the licence plate which was recognised at the entrance. The operator is notified if a conflict arises. If necessary, the vehicle has to remain at the exit until the conflict has been resolved or the problem is entered into the database as an unsolved conflict and the vehicle is allowed to exit the car park.

VIP list

- The VIP function allows the allocation of customers' cards to their vehicles. If a licence plate is recognised, the card's validity information is determined and checked. The barrier opens automatically after a successful check.

Greylist

- After recognition of a licence plate in the greylist, the operator is notified via a silent alarm and, if necessary, can take further steps.

Driver camera

- Die optionale Fahreramera ermöglicht eine eindeutige Zuordnung des Fahrers zu dem erkannten Kennzeichen.

Overview camera

- Together with the licence plate it is possible to save further images of the vehicle, which, if necessary, can be retrieved. Depending on the resolution of the overview camera and the lighting being used, existing damages can be detected prior to entering the car park.

Recognition Unit

- The recognition unit is a compact lane solution. It contains a camera, lens, infrared lighting, processor with recognition software and Ethernet connection.
- The following models are possible:
 - vertical or horizontal
 - with high resolution (for lane widths of up to 5.5m)
 - with heater

(c) 11.2021. Technical details subject to change

DESIGNA | KONTAKT

DESIGNA
Verkehrsleittechnik GmbH
Faluner Weg 3
24109 Kiel / Germany

T +49 431 5336-0
F +49 431 5336-260
info@designa.com
www.designa.com