

# Designa ELEMENTS SOFTWARE START

## Central operating software for DESIGNA parking management system

The comprehensive basic package START of the DESIGNA ELEMENTS SOFTWARE offers a wide range of standard functions for the optimal control of your parking management system as well as the car parks and devices.

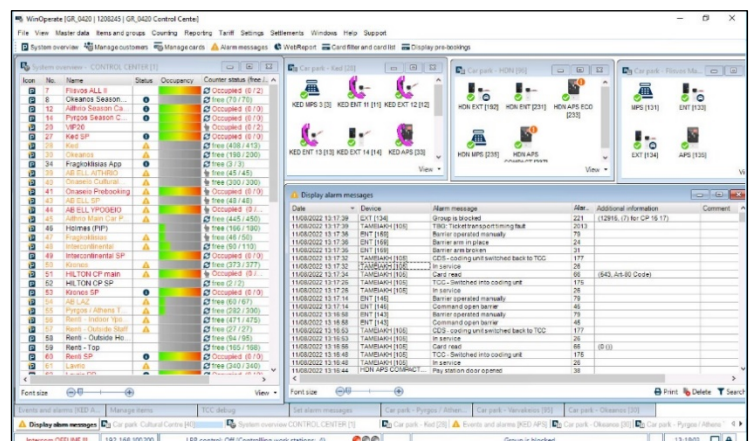
In addition to convenient access to all control functions, there are integrated administration functions for e.g. short-term parkers and season parkers, a flexible tariff structure as well as user administration with a complex authorisation concept, and much more.

A web-based reporting system furthermore provides well-founded key figures for the analysis and evaluation of your car park data.

With this basic package, your system is ready to use right away!

## FEATURES

- Individually scalable Windows application
- Control and management functions of the system as well as the car parks and individual devices
- Functional display of alarms with direct access to detailed information
- Managing customer and card data as well as creating various parking authorisations
- Customisation of the user interface in order to enable each user to work as efficiently as possible
- User administration can be set up in your Windows domain by your administrator, but is also conveniently possible via a single sign-on for your employees
- User administration with in-depth authorisation concept
- Answering Intercom calls
- Extensive search and filter functions
- The new DESIGNA Terminal Manager provides the operator with all information related to the parking process at a glance. Due to the mirroring of the device display, the operator sees exactly the same information as the car park customer and can provide immediate support in case of problems.
- The DESIGNA WinOperate installation takes place either directly on the supplied server or on a detached workstation with a Windows operating system.



## FUNCTIONS OF THE BASIC PACKAGE

### Short-term parker management with paper tickets

- Comprehensive tariff module for flexible setting of tariffs
- Payment with banknotes, coins or via credit card terminal at the automatic pay station
- Creating a lost ticket directly at the automatic pay station
- Overbooking function to maximise turnover allows temporary overbooking of the quotas for short-term parkers as compensation for unused season parker spaces
- Extended ticket imprint for the individual printing of text on the ticket

### Season parker management via RFID cards, QR codes or long range RFID tags

- Creating time-based cards
- Creating value-based cards
- Creating trip-based cards
- Creating quotas for B2B customers (customer-related counting)
- Selling items directly at the pay station, e.g. season parker cards
- Extending and topping up season parker cards at the automatic pay station

### Various discount options for short-term parkers (use of one cost centre)

- Discounting via the DESIGNA Web Validation Manager: Web application for issuing discounts for short-term parker tickets with magnetic strip or barcode technology
- Discounting via QR codes created with the DESIGNA COUPONOO software
- Discounting via external QR codes that are integrated into the system as a discount medium
- Discounting via additional insert cards, which are created at the manual pay station/ coding station
- Discounting via physical discount units that write the discount information on the ticket
- Discounting via QR codes (Promotional Codes), which are used for entry and then turned into a ticket with the corresponding discount information

### WebReport - Comprehensive reporting package with reports and statistics on key business data:

- Turnover statistics (turnover according to payment type)
- Cash book
- Throughput statistics
- Occupancy report
- Reporting on discounts allocated
- Technical lists (alarms, system and device status)

### PiP-Function

Support for complex car park architectures and tariffing requirements, e.g. PiP function:

- Function "Car park within a car park"
- Including summation of PiP tariffs

### ChangeLog

- Web application for personal tracking of changes on critical software configurations

### Control of DESIGNA certified free-space display boards

- Standardised software protocol for control of the car park signs for the display of car park occupancy in real time

### Control of DESIGNA certified traffic lights, GUIDE information panels or DESIGNA Digital Information Boards

- Software for signalling lane availability or parking space availability via "green arrow" for free parking spaces and "red cross" for occupied parking spaces

## SYSTEM REQUIREMENTS

- Depending on requirements, the ELEMENTS software can be hosted in the DESIGNA CLOUD, on a virtual machine in your professional IT environment or on a server supplied by DESIGNA.

## ELEMENTS SOFTWARE ADD-ONS

START is not sufficient for you? Then flexibly choose the ADD-ONS you want for your business.

- ELEMENTS SOFTWARE ADD-ON - LPR
- ELEMENTS SOFTWARE ADD-ON - TICKETLESS
- ELEMENTS SOFTWARE ADD-ON - VALIDATION
- ELEMENTS SOFTWARE ADD-ON - PAY-IN-LANE
- ELEMENTS SOFTWARE ADD-ON - CLASSIFICATION
- ELEMENTS SOFTWARE ADD-ON - DYNAMIC PRICING
- HOSTED SERVICES
- Various interface ADD ONs

## CONTACT

DESIGNA Verkehrsleittechnik GmbH  
Faluner Weg 3  
24109 Kiel, Germany

info@designa.com  
T: +49 (0) 431 5336-0  
F: +49 (0) 431 5336-260